

Quick Start Guide

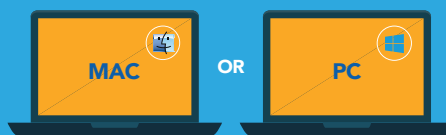


WiPG-2000



WiPG-1600

CHOOSE YOUR DEVICE



- 1 Connect your mobile device to the Wi-Fi name below

Wi-Fi name	Berry Secure
Login	Use your AD credentials

- 2 Download the MirrorOp Presenter app



- 3
 - Open app
 - Touch wePresent icon
 - Drag down to refresh
 - Select your wePresent device
 - * or input IP address manually *

- 4
 - Enter 4 digit code
 - Press connect

- 5
 - Select the file to present from the left
 - Select full screen or quadrant

- 2 OR Open AirPlay and select wePresent device

- 3 Move Mirroring slider to On position

- 4 Enter 4 digit code shown on display

- 5 Present from tablet or mobile device

- 1 Connect your computer to the Wi-Fi below

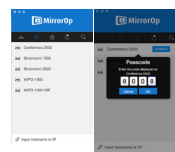
Wi-Fi name	Berry Secure
Login	Use your AD credentials

- 2 **DOWNLOAD** OR **ACCESS AS GUEST**

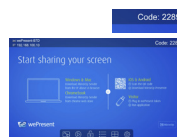
- Open browser
- Type IP address of the wePresent
- Click download software
- Install software
- OR
- Double-click .exe file from USB token
- OR
- Open browser
- Type IP address of wePresent
- Click download .EXE file

SCAN QR CODE ON STANDBY SCREEN

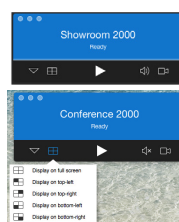
- 3
 - Launch software
 - Click rescan
 - Select your wePresent device
 - * or input IP address manually *



- 4
 - Enter 4 digit code
 - Press connect



- 5
 - Press 'play' button for full screen
 - Select quadrant icon to display in quad screen



- 1 Connect your computer to the Wi-Fi below

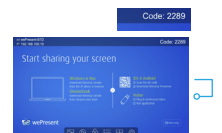
Wi-Fi name	Berry Secure
Login	Use your AD credentials

- 2 Download the MirrorOp Sender app in the Chrome Store

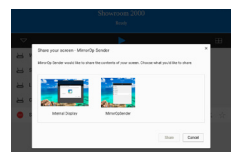


- 3
 - Launch software
 - Connect to wePresent device

- 4
 - Enter 4 digit code
 - Press connect



- 5 Select if you want to mirror your entire desktop, or just a single app



- 6
 - Press 'play' button for full screen
 - Select quadrant icon to display in quad screen